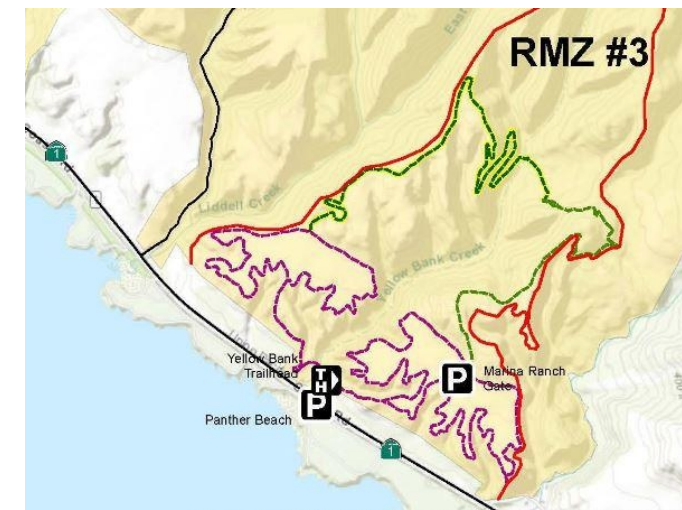


NOTES:

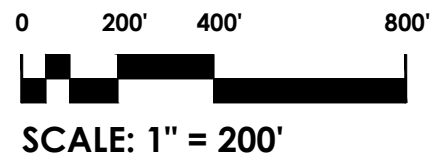
All of the parking area and access road are proposed to be designed and constructed within the Trust For Public Land property boundary. The proposed parking and access road equate to 1.85 acres.

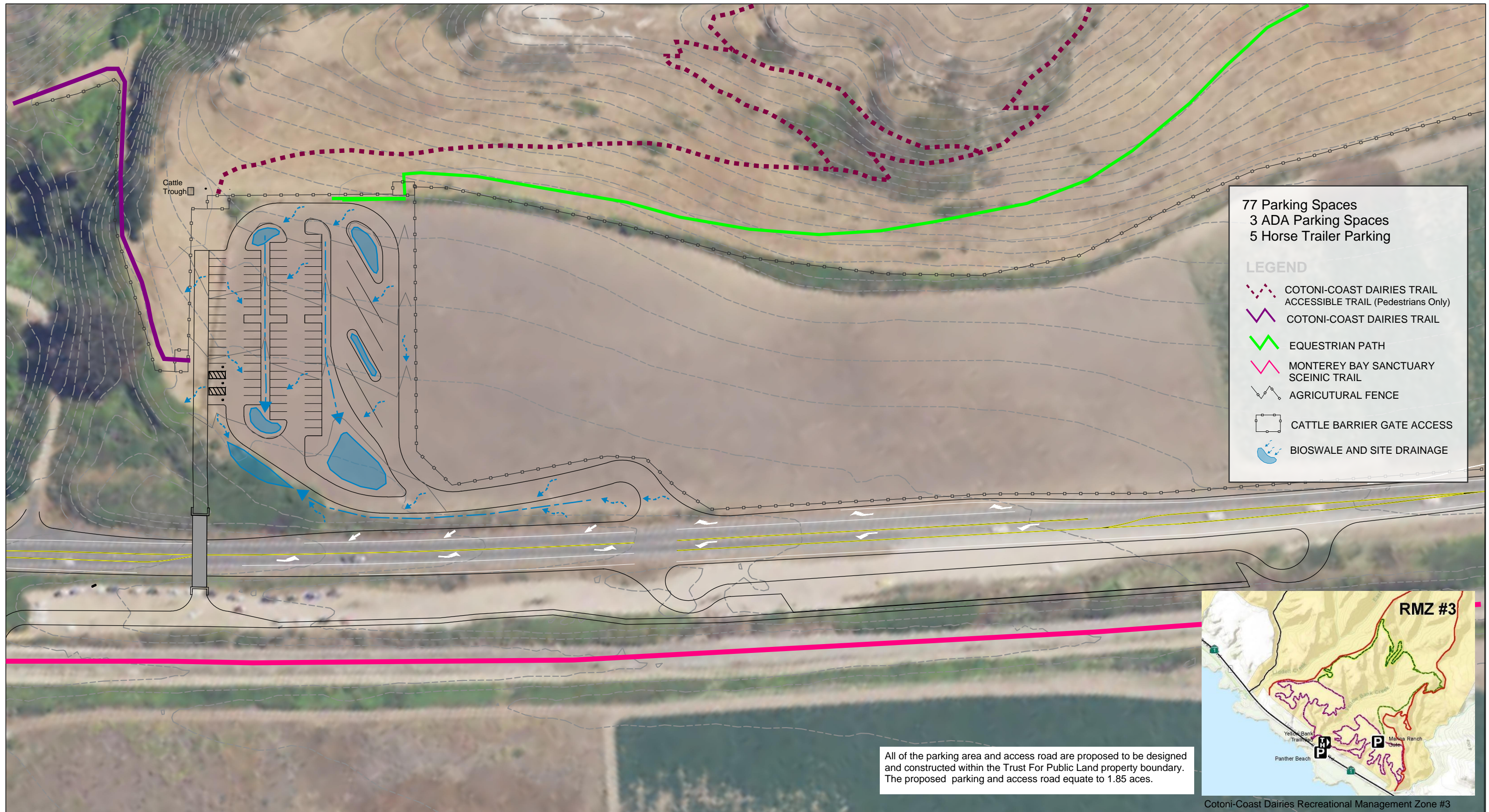


Cotoni-Coast Dairies Recreational Management Zone #3

LEGEND

-  TRAILHEAD ACCESS
-  COTONI-COAST DAIRIES TRAIL ACCESSIBLE TRAIL Alternatives (Pedestrians Only)
-  COTONI-COAST DAIRIES TRAIL
-  MONTEREY SANCTUARY SCENIC TRAIL
-  PANTHER BEACH ACCESS
-  EQUESTRIAN PATH (MULTIUSE PATH)
-  AGRICULTURAL FENCE
-  CATTLE BARRIER GATE ACCESS
-  BIOSWALE AND SITE DRAINAGE



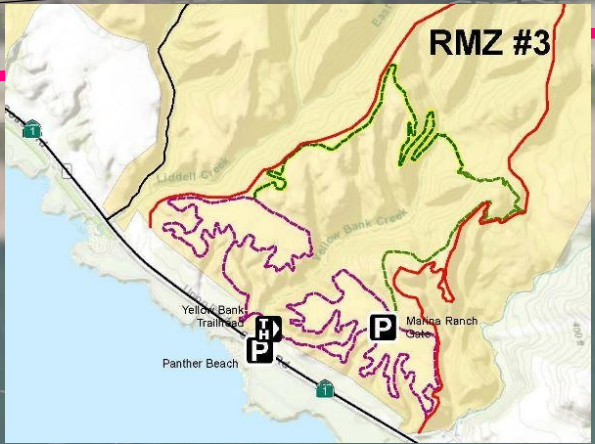


77 Parking Spaces
3 ADA Parking Spaces
5 Horse Trailer Parking

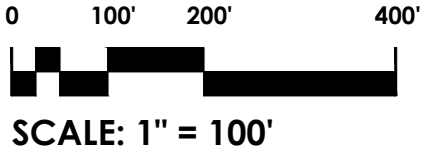
LEGEND

- COTONI-COAST DAIRIES TRAIL ACCESSIBLE TRAIL (Pedestrians Only)
- COTONI-COAST DAIRIES TRAIL
- EQUESTRIAN PATH
- MONTEREY BAY SANCTUARY SCEINIC TRAIL
- AGRICULTURAL FENCE
- CATTLE BARRIER GATE ACCESS
- BIOSWALE AND SITE DRAINAGE

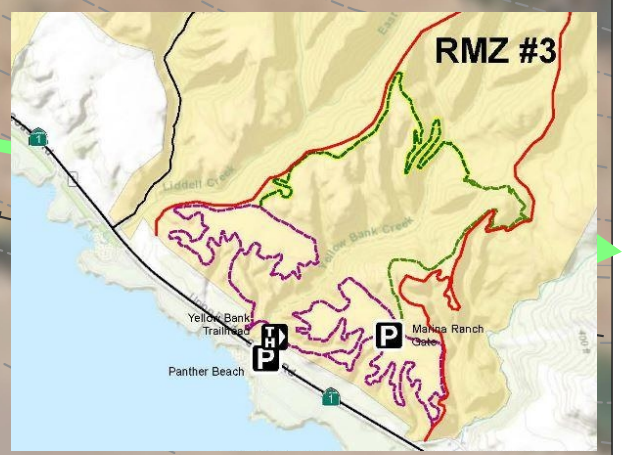
All of the parking area and access road are proposed to be designed and constructed within the Trust For Public Land property boundary. The proposed parking and access road equate to 1.85 acres.



Cotoni-Coast Dairies Recreational Management Zone #3



All of the parking area and access road are proposed to be designed and constructed within the Trust For Public Land property boundary. The proposed parking and access road equate to 1.85 acres.



Cotoni-Coast Dairies Recreational Management Zone #3

77 Parking Spaces
 3 ADA Parking Spaces
 5 Horse Trailer Parking

LEGEND

- COTONI-COAST DAIRIES TRAIL ACCESSIBLE TRAIL (Pedestrians Only)
- COTONI-COAST DAIRIES TRAIL
- EQUESTRIAN PATH
- AGRICULTURAL FENCE
- CATTLE BARRIER GATE ACCESS
- BIOSWALE AND SITE DRAINAGE



SCALE: 1" = 60'

Trust For Public Land - Preliminary Draft
 Cotoni-Coast Dairies Trailhead Feasibility Refinements

YELLOW BANK TRAILHEAD
 October 20, 2021